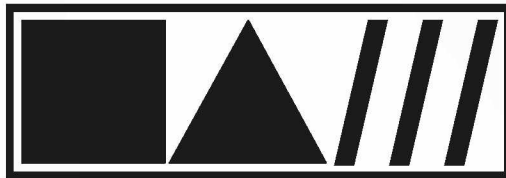




S námi se domluví každý...

ANGLIČTINA

pro nejmladší školáky
v JAZYKOVÉM STUDIU ROLINO
ve školním roce 2020/21



* 21.-36. lekce – 2. pololetí *



36. lekce - klíč

Student: _____





Prague Write today's date.

- Drilem:**
- * gramatická písnička: "ANGLICKÁ ABECEDA"
 - * gramatická písnička: "OSOBNÍ ZÁJMENA"
 - * člen neurčitý "a/an", člen určitý "the"
 - * podstatná jména v plurálu
 - * gramatická písnička: "PŘIDÁVÁNÍ "-es" U PODSTATNÝCH JMEN V PLURÁLU"
 - * neurčitá zájmena "some" a "any"
 - * minulý čas (préteritum) sloves: "get, come, bring, give" (otázka+kladná odpověď)
- * **triády pravidelných sloves**
 - * **II.tvar triády - minulý čas - préteritum**
 - * **triáda slovesa "do"**
 - * **otázka plnovýznamových sloves v minulém čase - préteritu**
 - * text na téma: "SPRING"
 - * text na téma: "Make a present for your Mum!"
 - * text na téma: "SUMMER"
 - * text na téma: "What can you do on your holiday?"

Write with coloured pencils! Napiš odpovídající písmeno správnou barvou do příslušného políčka!

Go down two squares.
* [əu] (black) *

Go down eight squares.
* [si:] (blue) *

Go down five squares.
* [ju:] (green) *

	O								
					V				
								U	
			W						
S									
					C				

Go up five squares.
Then go right four squares.
Then go up one square.
* [vi:] (yellow) *

Go up four squares.
Then go left three squares.
Then go down one square.
* [dablju:] (red) *

Go up two squares.
Then go left nine squares.
* [es] (grey) *

Zopakujte si **gramatickou písničku "ANGLICKÁ ABECEDA"!**
Zpívejte tuto gramatickou písničku zároveň s naší audiokazetou!

The key is at the end of the lesson.

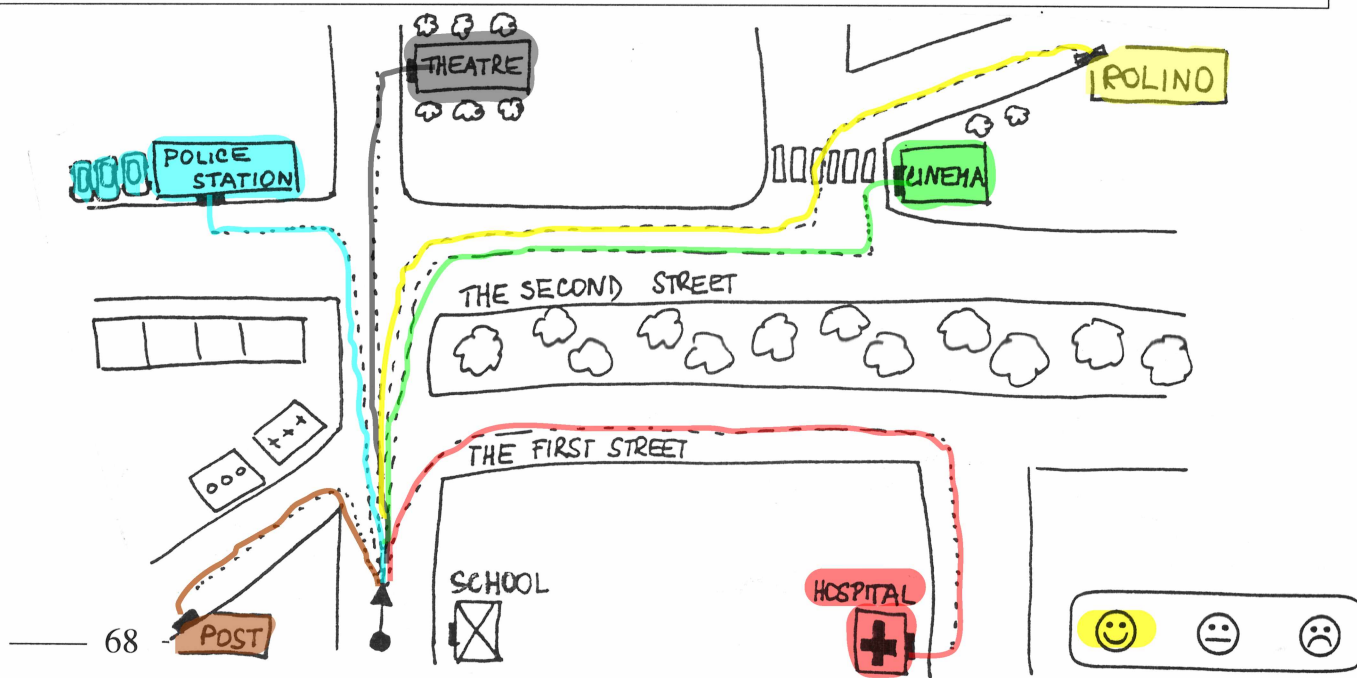
Nacvičujte následující rozhovory.

Orientujte se v mapce. Doplňte chybějící písmena.

Zakreslete správnou barvou pastelky dle textu.

You are standing in front of your school.

- ◆ **Excuse** me, please. How **can** I **get** to the **hospital**?
- ◆ **Go** straight **h** on. Then **tu**rn right. Then **go** straight on. Then **turn** right. Then **go** straight on. (red)
- ◆ **Excuse** me, please. How **can** I **get** to the **post office**?
- ◆ **Go** str_raight on. Then **tu**rn left. Then **go** str_ight on. (brown)
- ◆ **Excuse** me, please. How **can** I **get** to the **police station**?
- ◆ **Go** str_raight on. Then **cross** the first street. Then **go** str_ight on. Then **tu**rn left. (blue)
- ◆ **Excuse** me, please. How **can** I **get** to the **cinema**?
- ◆ **Go** straight on. Then **cross** the first stre_et. Then **go** straight on. Then **turn** right. Then **go** straight on. Then **turn** left. (green)
- ◆ **Excuse** me, please. How **can** I **get** to the **theatre**?
- ◆ **Go** straight on. Then **cross** the first street. Then **go** straight on. Then **cross** the second street. Then **go** straight on. (black)
- ◆ **Excuse** me, please. How **can** I **get** to the **ROLINO language studio**?
- ◆ **Go** straight on. Then **cross** the first stre_et. Then **go** straight on. Then **turn** right. Then **go** straight on. Then **turn** left. Then **go** straight on. Then **turn** right. Then **go** straight on. (yellow)



Zopakujme si drilem! (in the river, in the sea, in the pond, in the lake - to the seaside)

Jak je to správně? Dopiš, spoj čarou a vybarvi odpovídající obrázek.

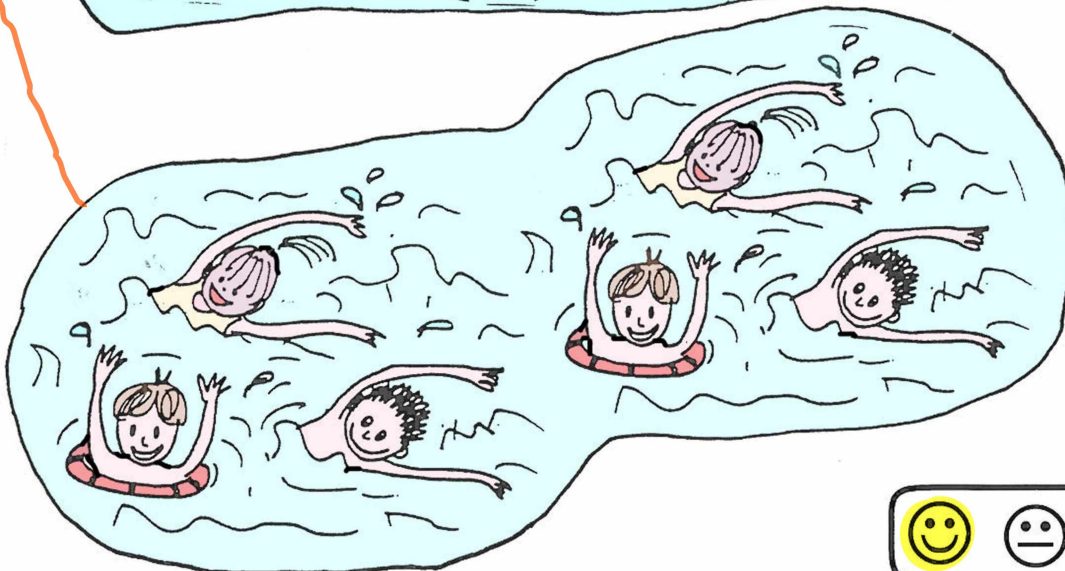
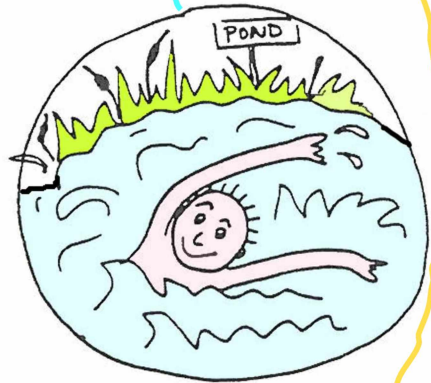
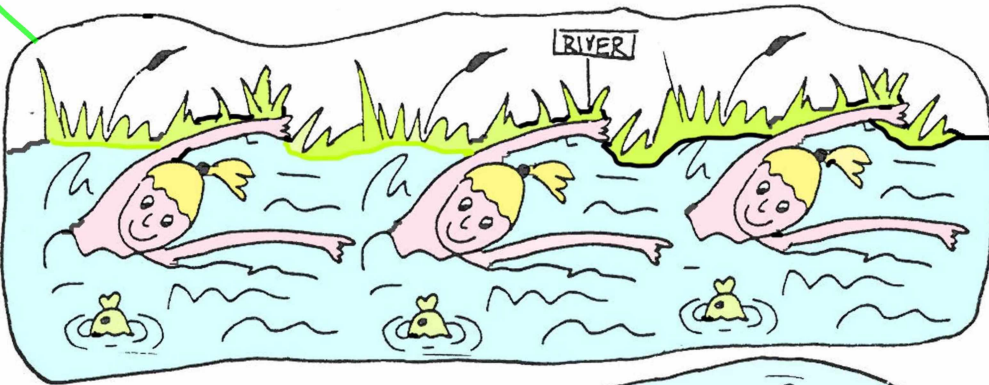
Zdůrazňujeme, že děj právě teď probíhá!

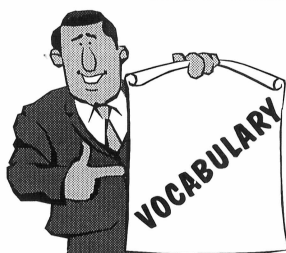
* Are your grandparents going to the seaside?
 * No, my grandparents aren't going to the seaside.
 They **are going** to the mountains.

* Are these three girls swimming in the lake?
 * No, **these three girls** aren't swimming in the lake.
 These three girls **are swimming** in the river.

* Are these six friends swimming in the river?
 * No, **these six friends** aren't swimming in the river.
 They **are swimming** in the sea.

* Is this boy swimming in the sea?
 * No, **this boy** isn't swimming in the sea.
This boy is swimming in the pond.





quiz, pl.: quizzes	[kwiz][kwiziz]	= zkouška, test, kviz, hádanka (zkouška důvtipu)
riddle	[ridl]	= hádanka, rébus
airplane	[eəplein]	= letadlo
to fly by airplane		= letět letadlem
Where? ... to the supermarket		= Kam? do supermarketu
Where? ... to the station		= Kam? na nádraží
Where? ... to the airport	[eəpo:t]	= Kam? na letiště

RIDDLE:

Complete:

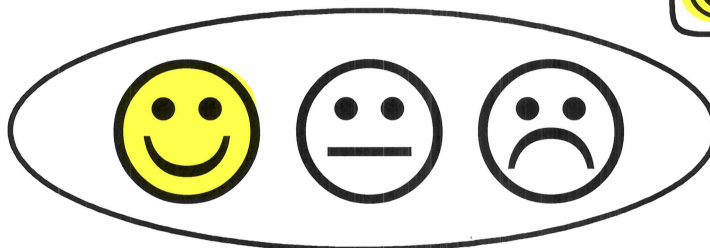
(Pramen: Almut Bartl: "QUIZ - ENGLISH", Arseditio, München, 1996.)

Question: Where **do** you **go** to fly by airplane?

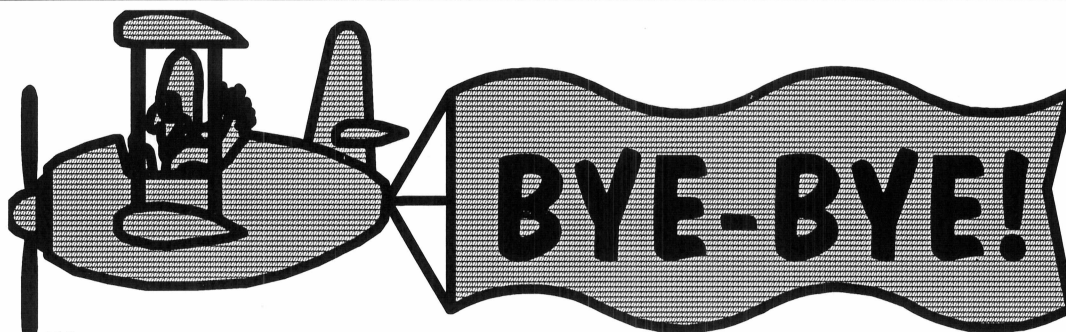
◆ to the supermarket ◆ to the station ◆ to the airport

Answer: _____ to the airport

to the airport



HAVE A NICE HOLIDAY!
SEE YOU IN SEPTEMBER!



Str. 68 / cv.: Zopakujme si ROLINO gramatickou písničku „ANGLICKÁ ABECEDA“!

1) Anglická abeceda

A B C D E F G
H I J K L M N O P
Q R S
T U V
W X Y Z

Now you **know** my alphabet.

tell me, what you **think** of that.