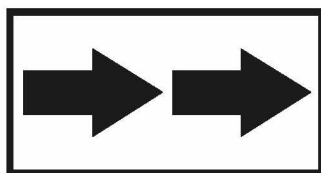
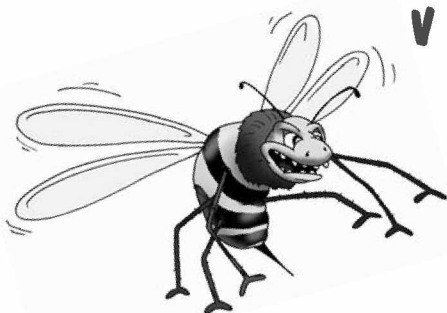


S námi se domluví každý...

ANGLIČTINA

pro starší školáky
v JAZYKOVÉM STUDIU ROLINO
ve školním roce 2020/21

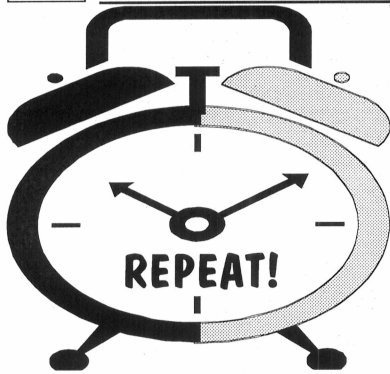


* 21.-38. lekce – 2. pololetí *

24. lekce - klíč

Student: _____

Určeno pro výuku cizích jazyků studentů pod vedením lektorů z Jazykového studia ROLINO.





Prague Write today's date.

Procvičte si drilem slovní zásobu:

Podstatná jména: great-grandfather, great-grandmother, office, trip, factory

Slovesa: marry sb., fall in love with sb., drink, eat, see, talk, tell, meet, live, like, sit

Ostatní slovní zásoba: together, crazy, fun, shy

1. Read. Use your dictionary. Write the new vocabulary into your exercise book.

Spring

starts on March 21st according to the calendar.

In spring flowers **start** growing and the grass **starts** turning green. You **can see** the first plants in the garden, e.g. snowdrops, snowflakes and primroses. Later violets, marsh marigolds, dandelions and lilies of the valley **are** in flower.

The weather **is** often unstable at this time. One moment the sun **is shining** and it **feels** warm, but suddenly the sky **becomes** overcast, it **starts** to rain and often it even **snows**. We **can** no longer **make** snowmen out of this wet snow. Fresh flowers and leaves **are** proof that winter **has come** to an end.

Pramen: Maturitní otázky z angličtiny, Jazyková literatura, 1996

2. Answer the questions in English:

1. When **does** spring **start**? 2. What flowers **can** you **see** in the garden? 3. What **is** the weather like in this season? 4. Why **can't** you **make** a snowman in spring?

The key is at the end of the lesson.

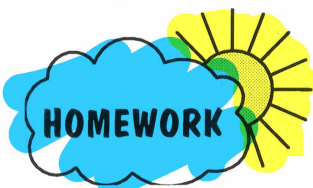
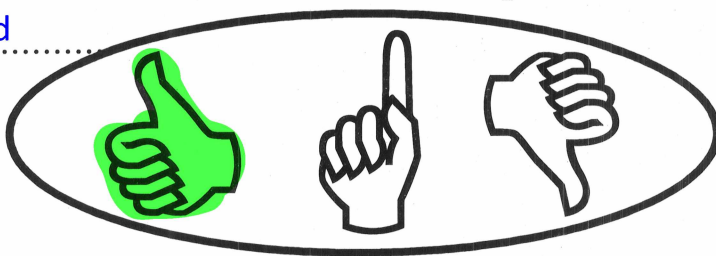
3. True or false?

1. Spring **starts** on March 21st. TRUE
2. In spring flowers **stop** growing. FALSE
3. The grass **starts** turning yellow. FALSE
4. You **can see** the first plants in the garden. TRUE
5. The weather **is** always the same at this time. FALSE
6. Often it even **snows**. TRUE
7. We **can no longer make** snowmen. TRUE

4. Fill in so that the text makes sense.

Spring **starts** on March 21st according to the calendar.

In spring flowers **start** growing and the grass **starts** turning green. You **can see** the first plants in the garden, e.g. snowdrops, snowflakes and primroses. Later violets, marsh marigolds, dandelions and lilies of the valley **are** in flower. The **weather** **is** often unstable at this time. One moment the sun **is** shining and it **feels** warm , but suddenly the sky **becomes** overcast, it **starts** ... to rain and often **it** even **snows**. We can no longer **make** snowmen out of this wet snow. Fresh flowers and leaves **are** proof that winter **has come** to an **end**



Fill in the missing vocabulary:



Aktivně probraná slovní zásoba

(21) - (24)

SLOVESA

break , broke, broken	[breik, bræuk, bræukn]	= rozbít, zlomit
build , built, built	[bild, bilt, bilt]	= stavět
carry	[kæri]	= nosit
climb	[klaim]	= šplhat
cook	[kuk]	= vařit
drink , drank, drunk	[drɪŋk, dræŋk, draŋk]	= pít
eat , ate, eaten	[i:t, eit, i:tn]	= jíst
fall in love with sb.		= zamilovat se
fall , fell, fallen	[fo:l, fel, fo:ln]	= padat, spadnout
grow , grew, grown	[grəu, gru:, grəun]	= růst, pěstovat
sing , sang, sung	[sɪŋ, sæŋ, saŋ]	= zpívat
sit , sat, sat	[sit, sæt sæt]	= sedět
sleep , slept, slept	[sli:p, slept, slept]	= spát

JE TŘEBA DRILEM JEŠTĚ ZOPAKOVAT:

PODSTATNÁ JMÉNA

bathroom	[ba:θru:m]	= koupelna
bedroom	[bedru:m]	= ložnice
children's room	[čɪldrəns ru:m]	= dětský pokoj
dandelion		= pampeliška
grass		= tráva
kitchen	[kičn]	= kuchyně
lily of the valley		= konvalinka



ANGLIČTINA pro starší školáky v jazykovém studiu ROLINO

lily		= lilie
living room	[livihru:m]	= obývací pokoj
marsh marigold		= blatouch
mess	[mes]	= nepořádek
order	[o:də]	= řád, pořádek
plant		= rostlina
primrose		= petrklíč
proof		= důkaz
room	[ru:m]	= pokoj
snowdrop		= sněženka
snowflake		= bledule
violet		= fialka

JE TŘEBA DRILEM JEŠTĚ ZOPAKOVAT:

OSTATNÍ SLOVNÍ ZÁSoba

according to		= podle
bright	[braɪt]	= jasný, veselý
dark	[da:k]	= tmavý
even		= dokonce
fresh		= čerstvý, svěží
How does your room look ?		= Jak vypadá tvůj pokoj?
light	[laɪt]	= světlý
My room is large and clean.		= Můj pokoj je velký a čistý.
My room looks nice.		= Můj pokoj vypadá pěkně.
My room is in a mess.		= V mém pokoji je nepořádek. (Můj pokoj je v nepořádku.)
overcast		= zatažený
pleasant	[ˈpleznt]	= příjemný, útulný
unstable		= nestabilní, nestálý
What does your room look like?		= Jak vypadá tvůj pokoj?

JE TŘEBA DRILEM JEŠTĚ ZOPAKOVAT:



Str. 15 / cv. 2: Answer the questions in English.

1) When **does** spring **start**?

Spring **starts** on March 21st.

2) What flowers **can** you **see** in the garden?

You **can see** many flowers in the garden - for example snowdrops, snowflakes and primroses and later violets, marsh marigolds, dandelions and lilies of the valley.

3) What **is** the weather like in this season?

The weather **is** usually unstable - one moment it **feels** warm, then the sky **becomes** overcast and it **starts** to rain, sometimes it even **snows**.

4) Why **can't** you **make** a snowman in spring?

Because the snow **is** too wet.