

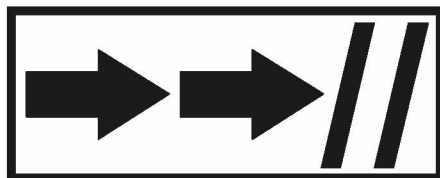
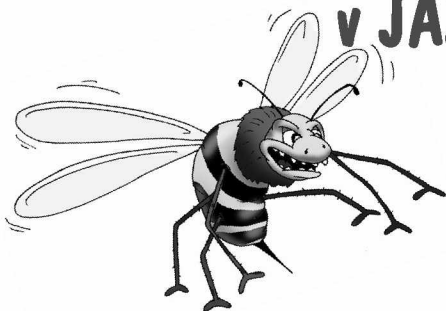
S námi se domluví každý...

ANGLIČTINA

pro starší školáky

v JAZYKOVÉM STUDIU ROLINO

ve školním roce 2020/21



* 1.-20. lekce – 1. pololetí *

19. lekce - klíč

Student: _____

Určeno pro výuku cizích jazyků studentů pod vedením lektorů z Jazykového studia ROLINO.



ANGLIČTINA pro starší školáky v jazykovém studiu ROLINO





Prague Write today's date.

Drilem:

* klad, otázka a zápor plnovýznamových sloves v přítomném čase prostém, minulém čase - préteritu a v budoucím čase - will

* třídy nepravidelných sloves

* přítomný čas průběhový - klad, otázka, zápor

* stupňování krátkých a dlouhých přídavných jmen, srovnávání na všech stupních, i nepravidelné

* vazba "be going to"

1. Translate:

1. Nehodlám to poslouchat.

= I am not going to listen to it.

2. Kdy se hodláš učit matematiku?

= When are you going to learn math?

3. Koho se chystají pozvat?

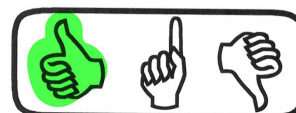
= Who are they going to invite?

4. Hodlám oslavit své narozeniny příští týden.

= I am going to celebrate my birthday next week.

5. Kam se chystáte jet?

= Where are you going to go?



2. Write the sentences into your exercise book and translate them into Czech:

- (1) [dablju:] [eič] [ei] [ti] [si:] [ei] [en] [wai] [əu] [ju:] [di:] [əu] [ai] [en] [dablju:] [ai] [en] [ti] [i:] [a:]?
- (2) [ai] [si:] [ei] [en] [es] [kei] [ai].
- (3) [ai] [si:] [ei] [en] [ai] [si] [i:] - [es] [kei] [ei] [ti:] [i:].
- (4) [ai] [si:] [ei] [en] [es] [el] [i:] [di:] [dži:] [i:].
- (5) [ai] [si:] [ei] [en] [em] [ei] [kei] [i:] [ei] [bi:] [ai] [dži:] [es] [en] [əu] [dablju:] [em] [ei] [en].

The key is at the end of the lesson.

3. Answer the questions in English:

1. What **is** the weather like in winter?
2. What **do** people usually **do** in winter?
3. What **do** people usually **wear** in winter?
4. Which holidays **do** we **celebrate** in winter? How?

The key is at the end of the lesson.

4. Describe the picture:



The key is at the end of the lesson.



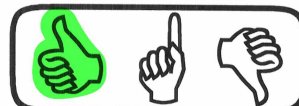
above	[ə'baʊ]	= nad
around	[ə'raʊnd]	= okolo, kolem
below	[bi'ləʊ]	= pod
cover	[kavə]	= pokrýt
even	[i:vn]	= dokonce, i
freeze, froze, frozen	[fri:z, frəʊz, frəʊzn]	= mrznout
It gets dark.		= Stmívá se.
low	[ləʊ]	= nízký
mild	[maɪld]	= mírný
mood	[mu:d]	= nálada
mud	[mʌd]	= bláto
puddle	[pʌdl]	= louže
roof	[ru:f]	= střecha
slush	[slʌʃ]	= břečka, rozbředlý sníh
temperature	[tempričə]	= teplota
village	[vɪlɪdʒ]	= vesnice

5. Read and fill in the missing words:

short, mood, slush, above, mild, hard, puddles, freezes, covers, below, season, temperature, even, depressed, dark

WINTER WEATHER

Winter **is** the coldest **season** of the year. The **temperature** **is** very low, usually **below** zero. Many people **like** winter with snow which **covers** the trees, the grass, the hills, the roofs of the villages and towns. When it **freezes**, **there is** ice on the **puddles**, ponds, lakes and sometimes **even** on the rivers, when the frost **is** really **hard** But sometimes the winter **is** **mild**, the temperature **is** around zero or even **above** it. It often **rains**, **there is** **slush** and mud in the streets, people **are** in a bad **mood**, sometimes they **are** **depressed** because the days **are** very **short** and it **gets** **dark** early.



6. True or false?

1. In winter it always **snows**. FALSE
2. It **gets dark** early, the days **are** the shortest of the year. TRUE
3. When the temperature **is** below zero, it **freezes**. TRUE
4. Many people **are** in a bad mood in winter when it **rains**. TRUE
5. The snow **covers** the trees, the hills, the grass and the roofs. TRUE
6. People usually **like** it when **there is** slush in the streets. FALSE
7. When it **rains**, **there is** usually mud in the streets. TRUE
8. When the temperature **is** above zero, it sometimes **rains**. TRUE
9. People usually **do not like** it when it **snows**. FALSE
10. When the winter **is** mild, the frost **is not** very hard. TRUE



HOMEWORK

Translate. Write into your exercise book:

1. Na ulicích je bláto.
2. Lidé jsou často sklíčení.
3. Když prší, moji kamarádi mají špatnou náladu.
4. Sníh pokrývá stromy a trávu.
5. Nemrzlo.
6. Minulý týden sněžilo.
7. Mám rád, když je teplota pod nulou.
8. Jeho bratr nemá rád mírnou zimu.
9. Dny jsou krátké a brzy se stmívá.
10. Na rybníce je led.

The key is at the end of the lesson.

Str. 72 / cv. 2: Write into your exercise book and translate into Czech.

- 1) What can you **do** in winter?
= Co můžeš dělat v zimě?
- 2) I can **ski**.
= Můžu lyžovat.
- 3) I can **ice-skate**.
= Můžu bruslit.
- 4) I can **sledge**.
= Můžu sáňkovat.
- 5) I can **make** a big snowman.
= Můžu udělat velkého sněhuláka.

Str. 72 / cv. 3: Answer the questions in English.

např.

- 1) What **is** the weather like in winter?
It's usually **freezing** and **there is** a lot of snow.
- 2) What **do** people usually **do** in winter?
People usually **ski, sledge** or **make** a snowman in winter.
- 3) What **do** people usually **wear** in winter?
People usually **wear** warm clothes like coats and scarfs.
- 4) Which holidays **do** we **celebrate** in winter? How?
In winter we **celebrate** St. Nicholas Day. St. Nicholas, an angel and a devil **come** to visit the children. We also **celebrate** Christmas. We **decorate** Christmas trees, **eat** Christmas dinner and **give** each other presents.

Str. 72 / cv. 4: Describe the picture.

např.

There are two children in the picture. They **are wearing** warm clothes. They **are making** a snowman. The bigger child **is putting** the head on the snowman. The smaller child **is putting** a carrot nose on the snowman's head.

Str. 74 / homework: Translate. Write into your exercise book.

- 1) Na ulicích je bláto.
= **There is** mud in the streets.
- 2) Lidé jsou často sklíčení.
= People **are** often depressed.
- 3) Když prší, moji kamarádi mají špatnou náladu.
= When it **rains**, my friends **are** in a bad mood.
- 4) Sníh pokrývá stromy a trávu.
= Snow **covers** trees and grass.
- 5) Nemrzlo.
= It **didn't freeze**.
- 6) Minulý týden sněžilo.
= It **snowed** last week.
- 7) Mám rád, když je teplota pod nulou.
= I **like** when the temperature **is** below zero.
- 8) Jeho bratr nemá rád mírnou zimu.
= His brother **doesn't like** mild winter.
- 9) Dny jsou krátké a brzy se stmívá.
= Days **are** short and it **gets dark** early.
- 10) Na rybníce je led.
= **There is** ice on the pond.