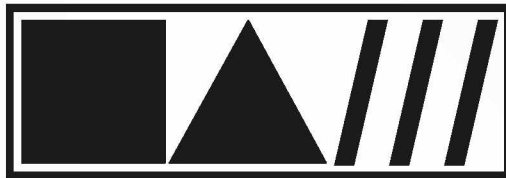


*S námi se domluví každý...*

# ANGLIČTINA

pro nejmladší školáky  
v JAZYKOVÉM STUDIU ROLINO  
ve školním roce 2019/20



\* 21.-36. lekce – 2. pololetí \*

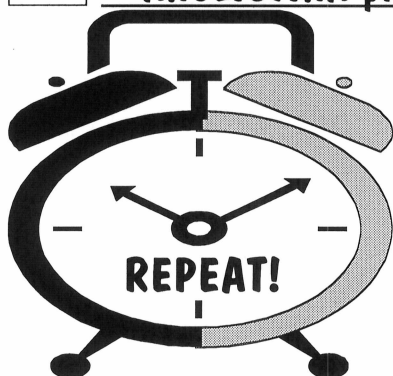


## 36. lekce - klíč

Student: \_\_\_\_\_



# ANGLIČTINA pro nejmladší školáky v jazykovém studiu ROLINO



---

---

---

---

---

---

---

---



Prague 25th - 29th May

## Drilem:

- \* gramatická písnička: "ANGLICKÁ ABECEDA"
- \* gramatická písnička: "OSOBNÍ ZÁJMENA"
- \* člen neurčitý "a/an", člen určitý "the"
- \* podstatná jména v plurálu
- \* gramatická písnička: "PŘIDÁVÁNÍ "-es" U PODSTATNÝCH JMEN V PLURÁLU"
- \* neurčitá zájmena "some" a "any"
- \* minulý čas (préteritum) sloves: "get, come, bring, give" (otázka+kladná odpověď)
- \* **triády pravidelných sloves**
- \* **II.tvar triády - minulý čas - préteritum**
- \* **triáda slovesa "do"**
- \* **otázka plnovýznamových sloves v minulém čase - préteritu**
- \* text na téma: "SPRING"
- \* text na téma: "Make a present for your Mum!"
- \* text na téma: "SUMMER"
- \* text na téma: "What can you do on your holiday?"

**Write with coloured pencils!** *Napiš odpovídající písmeno správnou barvou do příslušného políčka!*

Go down two squares.

\* [əu] (black) \*



Go down eight squares.

\* [si:] (blue) \*



Go down five squares.

\* [ju:] (green) \*



	O								
					V				
								U	
			W						
S									
					C				

Go up five squares.  
Then go right four squares.  
Then go up one square.

\* [vi:] (yellow) \*



Go up four squares.  
Then go left three squares.  
Then go down one square.

\* [dablju:] (red) \*



Go up two squares.  
Then go left nine squares.

\* [es] (grey) \*





Zopakujme si gramatickou písničku "ANGLICKÁ ABECEDA"!  
Zpívejme tuto gramatickou písničku zároveň s naší audiokazetou!

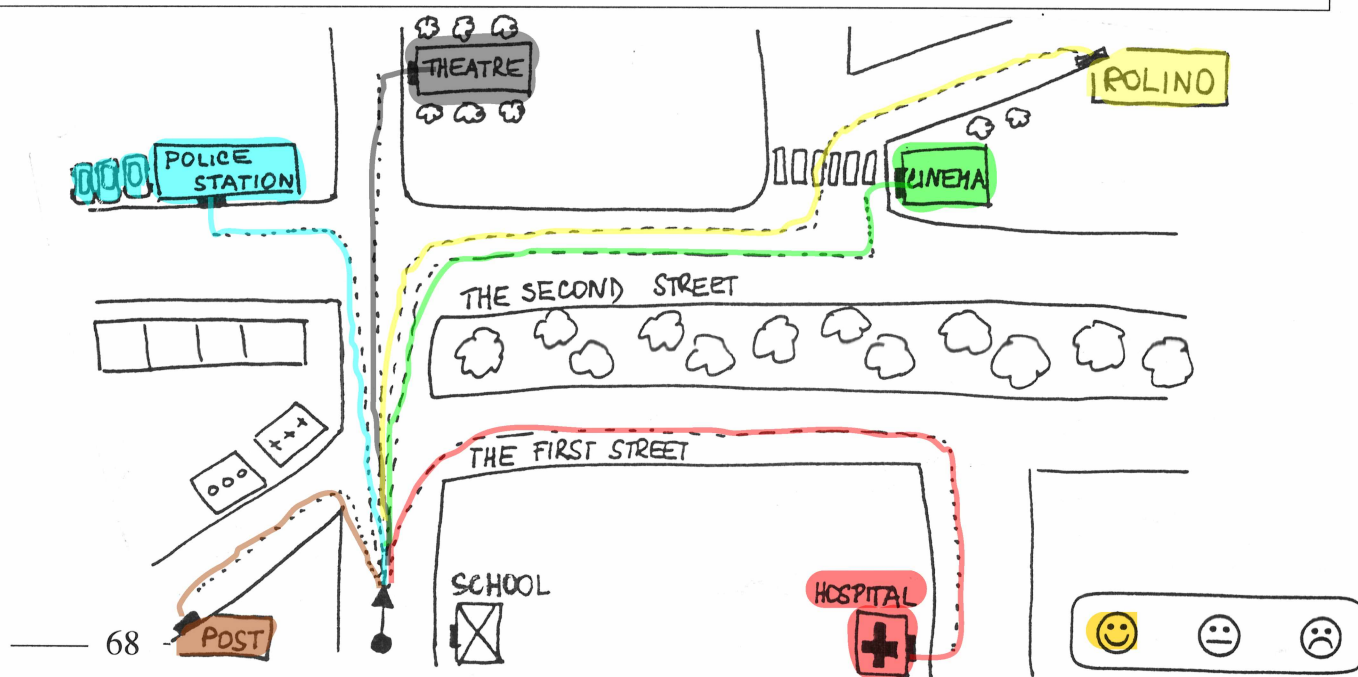
Nacvičujte následující rozhovory.

Orientujte se v mapce. Doplňte chybějící písmena.

Zakreslete správnou barvou pastelky dle textu.

## You are standing in front of your school.

- ◆ Exceuse me, please. How can I get to the hospital?
- ◆ Go straight on. Then turn right. Then go straight on. Then turn right. Then go straight on. .... (red)
- ◆ Excuse me, please. How can I get to the post office?
- ◆ Go straight on. Then turn left. Then go straight on. .... (brown)
- ◆ Excuse me, please. How can I get to the police station?
- ◆ Go straight on. Then cross the first street. Then go straight on. Then turn left. .... (blue)
- ◆ Excse me, please. How can I get to the cinema?
- ◆ Go straight on. Then cross the first street. Then go straight on. Then turn right. Then go straight on. Then turn left. .... (green)
- ◆ Excse me, please. How can I get to the theatre?
- ◆ Go straight on. Then cross the first street. Then go straight on. Then cross the second street. Then go straight on. .... (black)
- ◆ Excse me, please. How can I get to the ROLINO language studio?
- ◆ Go straight on. Then cross the first street. Then go straight on. Then turn right. Then go straight on. Then turn left. Then go straight on. Then turn right. Then go straight on. .... (yellow)





**Zopakujme si drilem!** (in the river, in the sea, in the pond, in the lake - to the seaside)

**Jak je to správně? Dopiš, spoj čarou a vybarvi odpovídající obrázek.**

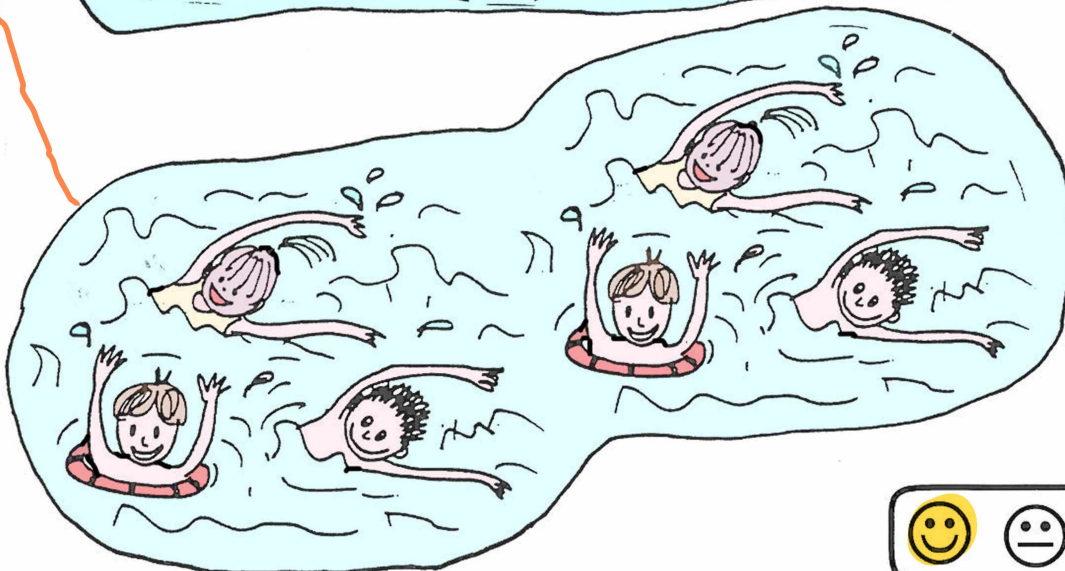
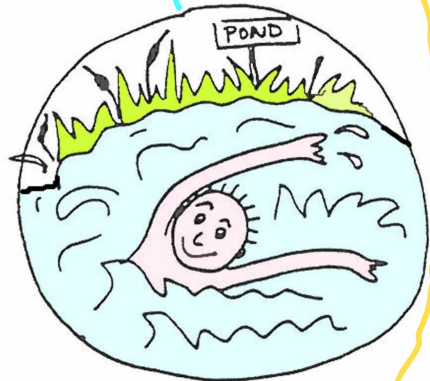
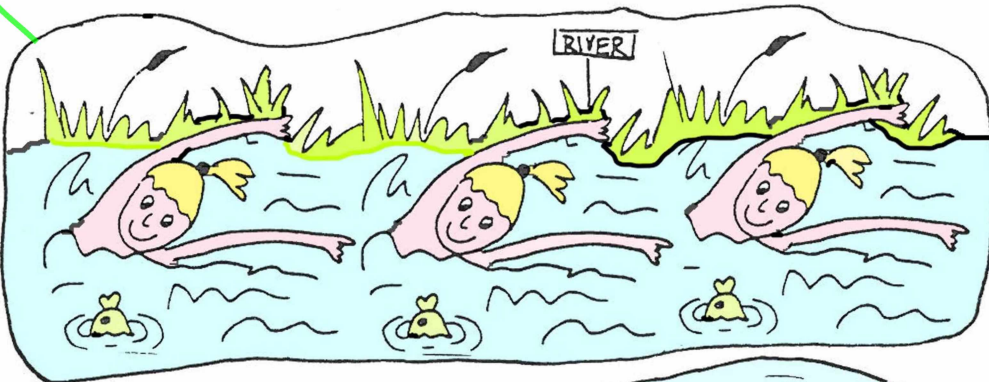
**Zdůrazňujeme, že děj právě teď probíhá!**

\* Are your grandparents going to the seaside?  
 \* No, my grandparents aren't going to the seaside.  
 They **are going** to the mountains.

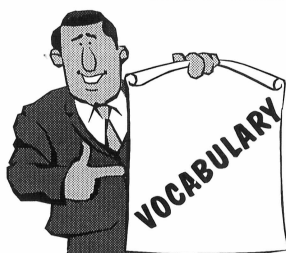
\* Are these three girls swimming in the lake?  
 \* No, **these three girls** aren't swimming in the lake.  
 These three girls **are swimming** in the river.

\* Are these six friends swimming in the river?  
 \* No, **these six friends** aren't swimming in the river.  
 They **are swimming** in the sea.

\* Is this boy swimming in the sea?  
 \* No, **this boy** isn't swimming in the sea.  
**This boy is swimming** in the pond.







quiz, pl.: quizzes	[kwiz][kwiziz]	= zkouška, test, kviz, hádanka (zkouška důvtipu)
riddle	[ridl]	= hádanka, rébus
airplane	[eəplein]	= letadlo
to fly by airplane		= letět letadlem
Where? ... to the supermarket		= Kam? do supermarketu
Where? ... to the station		= Kam? na nádraží
Where? ... to the airport	[eəpo:t]	= Kam? na letiště

### RIDDLE:

### Complete:

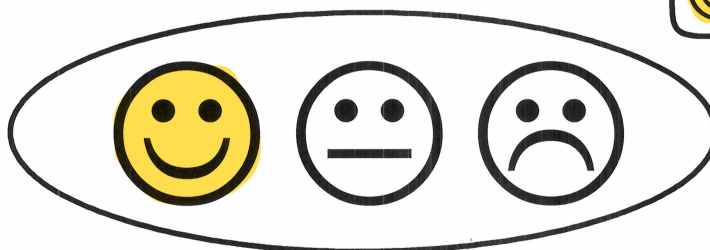
(Pramen: Almut Bartl: "QUIZ - ENGLISH", Arseditio, München, 1996.)

Question: Where do you go to fly by airplane?

◆ to the supermarket ◆ to the station ◆ to the airport

Answer: \_\_\_\_\_  
to the airport

to the airport



**HAVE A NICE HOLIDAY!**

**SEE YOU IN SEPTEMBER!**

